

Chicago Park District Natural Areas RFQA: Madigan Park Natural Area

		Prairie
species	common_name	2022
invasive		
<i>Centaurea maculosa</i>	spotted knapweed	1
<i>Cichorium intybus</i>	chicory	1
<i>Convolvulus arvensis</i>	field bindweed	1
<i>Dipsacus spp.</i>	teasel	1
<i>Pastinaca sativa</i>	wild parsnip	1
<i>Phragmites australis</i>	common reed	2
native		
<i>Acer saccharinum</i>	silver maple	1
<i>Ambrosia artemisiifolia</i>	common ragweed	3
<i>Ambrosia trifida</i>	giant ragweed	1
<i>Asclepias syriaca</i>	common milkweed	1
<i>Bouteloua curtipendula</i>	side-oats grama	1
<i>Eupatorium altissimum</i>	tall boneset	1
<i>Eupatorium serotinum</i>	late boneset	1
<i>Gymnocladus dioicus</i>	kentucky coffee tree	2
<i>Oenothera biennis</i>	common evening primrose	1
<i>Phytolacca americana</i>	pokeweed	1
<i>Quercus macrocarpa</i>	bur oak	1
<i>Quercus rubra</i>	red oak	1
<i>Rudbeckia hirta</i>	black-eyed susan	2
<i>Silphium perfoliatum</i>	cup plant	1
<i>Solidago altissima</i>	tall goldenrod	1
<i>Tradescantia ohiensis</i>	common spiderwort	1
<i>Ulmus americana</i>	american elm	2

Note:

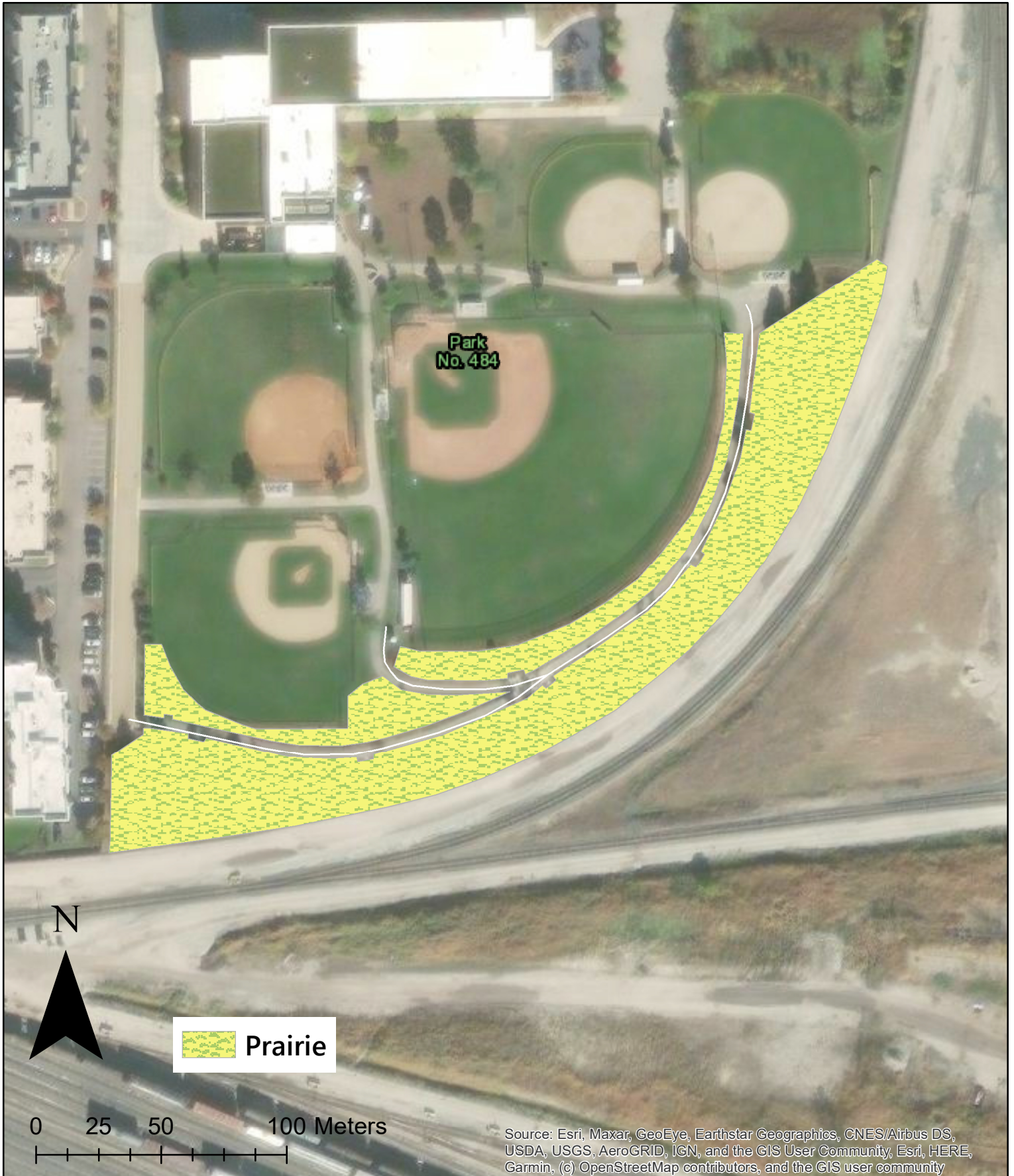
Cover classes of RFQA Species: 1 = 0-1%, 2 = 2-5%, 3 = 6-25%,
4 = 26-50%, 5 = 51-75%, 6 = 76-95%, 7 = 96-100%

Note:

Starting in 2019, invasive species were included in the species list.

NATURAL AREAS

Rapid Floristic Quality Assessment 2022



Source: Esri, Maxar, GeoEye, Earthstar Geographics, CNES/Airbus DS, USDA, USGS, AeroGRID, IGN, and the GIS User Community, Esri, HERE, Garmin, (c) OpenStreetMap contributors, and the GIS user community