

Chicago Park District Natural Areas RFQA: Horner Park Natural Area

species	common_name	Savanna		Wet Prairie		Wetland
		2017	2021	2017	2021	2017
<b>invasive</b>						
<i>Convolvulus arvensis</i>	field bindweed		1			
<i>Daucus carota</i>	queen anne's lace				1	
<i>Lonicera spp.</i>	honeysuckle				1	
<i>Melilotus spp.</i>	sweet clover				1	
<i>Phalaris arundinacea</i>	reed canary grass				1	
<i>Phragmites australis</i>	common reed				2	
<i>Rhamnus cathartica</i>	common buckthorn		2		1	
<i>Typha spp.</i>	cattails				2	
<b>native</b>						
<i>Acer saccharinum</i>	silver maple		1			
<i>Acer saccharum</i>	sugar maple	1	1			
<i>Allium cernuum</i>	nodding wild onion		1			
<i>Ambrosia artemisiifolia</i>	common ragweed	1				
<i>Ambrosia trifida</i>	giant ragweed		1	1	1	
<i>Amorpha fruticosa</i>	indigo bush				2	2
<i>Aquilegia canadensis</i>	wild columbine	1	1			
<i>Asclepias syriaca</i>	common milkweed	1		1	1	
<i>Asclepias tuberosa</i>	butterfly weed	2	2		2	
<i>Baptisia lactea</i>	white wild indigo		1		1	
<i>Calamagrostis canadensis</i>	blue joint grass				1	
<i>Celtis occidentalis</i>	hackberry	3	2	1	1	
<i>Cephalanthus occidentalis</i>	buttonbush			1		
<i>Coreopsis palmata</i>	prairie coreopsis	1				
<i>Coreopsis tripteris</i>	tall coreopsis					1
<i>Cornus racemosa</i>	gray dogwood			1	1	
<i>Dalea purpurea</i>	purple prairie clover	1	1	1	1	1
<i>Desmanthus illinoensis</i>	illinois bundleflower		1	2	1	
<i>Echinacea purpurea</i>	purple coneflower	2	2	1	1	1
<i>Elymus canadensis</i>	canada wild rye	3	2	2	2	
<i>Eryngium yuccifolium</i>	rattlesnake master			1	1	
<i>Eupatorium serotinum</i>	late boneset			1		
<i>Eutrochium purpureum</i>	purple joe pye weed				1	
<i>Fraxinus lanceolata</i>	green ash				1	1
<i>Geum canadense</i>	white avens				1	
<i>Gleditsia triacanthos</i>	honey locust	3	3			
<i>Glyceria striata</i>	green fowl manna grass	1				
<i>Gymnocladus dioicus</i>	kentucky coffee tree	1				
<i>Helianthus grosseserratus</i>	sawtooth sunflower				1	1
<i>Helianthus mollis</i>	downy sunflower	1				
<i>Heliopsis helianthoides</i>	false sunflower		2		2	
<i>Juglans nigra</i>	black walnut		1		1	
<i>Monarda fistulosa</i>	wild bergamot		2		2	

Chicago Park District Natural Areas RFQA: Horner Park Natural Area (continued)

species	common_name	Savanna		Wet Prairie		Wetland
		2017	2021	2017	2021	2017
<i>Oenothera biennis</i>	common evening primrose					1
<i>Oligoneuron rigidum</i>	stiff goldenrod	1	1	1	1	
<i>Panicum virgatum</i>	switch grass		1		2	
<i>Parthenocissus quinquefolia</i>	virginia creeper				1	
<i>Physostegia virginiana</i>	obedient plant					1
<i>Phytolacca americana</i>	pokeweed	1				
<i>Plantago rugelii</i>	red-stalked plantain		1			
<i>Pontederia cordata</i>	pickerelweed					1
<i>Populus deltoides</i>	eastern cottonwood	1	1	1	1	1
<i>Pycnanthemum tenuifolium</i>	slender mountain mint	1	1	1	1	
<i>Pycnanthemum virginianum</i>	common mountain mint					1
<i>Quercus alba</i>	white oak	1	1			
<i>Quercus bicolor</i>	swamp white oak		1	1		
<i>Quercus imbricaria</i>	shingle oak	1				
<i>Quercus rubra</i>	red oak	3	2		1	
<i>Ratibida pinnata</i>	yellow coneflower	2	2		2	1
<i>Rhus glabra</i>	smooth sumac		1			
<i>Rubus occidentalis</i>	black raspberry				1	
<i>Rudbeckia hirta</i>	black-eyed susan	1			1	
<i>Rudbeckia triloba</i>	brown black-eyed susan					1
<i>Salix interior</i>	sandbar willow				1	1
<i>Sambucus canadensis</i>	elderberry					2
<i>Schizachyrium scoparium</i>	little bluestem		2	2		
<i>Silphium perfoliatum</i>	cup plant		1		1	1
<i>Solidago altissima</i>	tall goldenrod	2	2		1	
<i>Solidago juncea</i>	early goldenrod			1		
<i>Solidago ulmifolia</i>	elm-leaved goldenrod	1	1			
<i>Sorghastrum nutans</i>	indian grass		1	1		
<i>Sporobolus heterolepis</i>	prairie dropseed		1			
<i>Symphyotrichum ericoides</i>	heath aster		1			
<i>Symphyotrichum laeve</i>	smooth blue aster	1	1			
<i>Tilia americana</i>	american linden	2				
<i>Tradescantia ohiensis</i>	common spiderwort	1	1		1	
<i>Ulmus americana</i>	american elm		1		1	
<i>Verbena stricta</i>	hoary vervain	1	1		1	
<i>Vernonia fasciculata</i>	common ironweed	1				
<i>Zizia aurea</i>	golden alexanders	1	1		1	1

Note:

Cover classes of RFQA Species: 1 = 0-1%, 2 = 2-5%, 3 = 6-25%,

4 = 26-50%, 5 = 51-75%, 6 = 76-95%, 7 = 96-100%

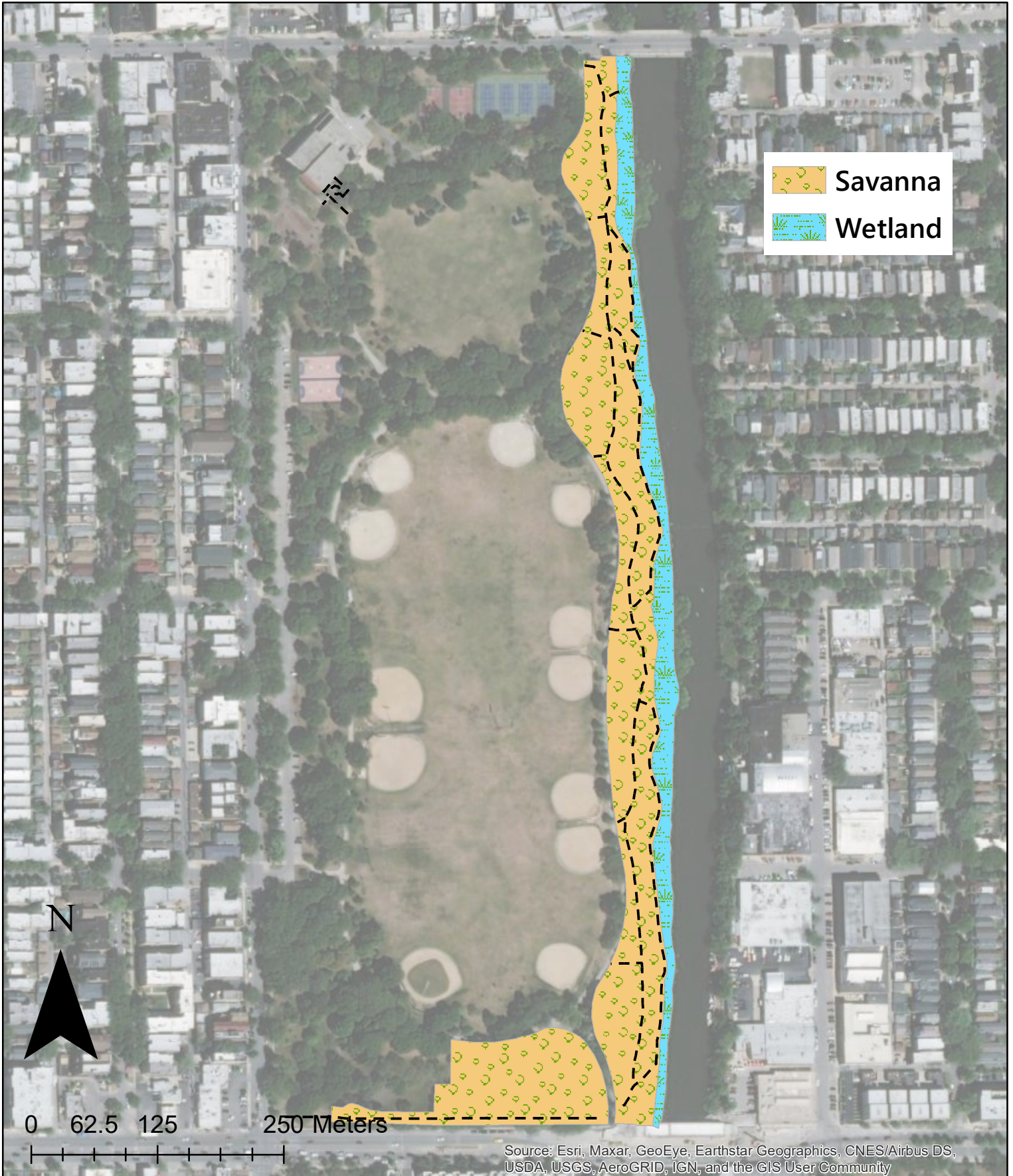
Note:

Starting in 2019, invasive species were included in the species list.

# NATURAL AREAS

## Horner Park Natural Area

Rapid Floristic Quality Assessment 2021



Source: Esri, Maxar, GeoEye, Earthstar Geographics, CNES/Airbus DS, USDA, USGS, AeroGRID, IGN, and the GIS User Community