

Chicago Park District Natural Areas RFQA: Eugene Field Park Natural Area

species	common_name	Prairie		Savanna	Wet Prairie		Wetland	
		2015	2019	2019	2015	2019	2015	2019
invasive								
<i>Daucus carota</i>	queen anne's lace					2		
<i>Hesperis matronalis</i>	dame's rocket					1		
<i>Melilotus spp.</i>	sweet clover		3	2		3		
<i>Rhamnus cathartica</i>	common buckthorn			1				
<i>Typha spp.</i>	cattails							2
native								
<i>Acer negundo</i>	boxelder		1					
<i>Acer rubrum</i>	red maple	1			1			1
<i>Acer saccharinum</i>	silver maple		1					1
<i>Andropogon gerardii</i>	big bluestem	2	1	1	3			
<i>Asclepias syriaca</i>	common milkweed	2	2	2	1			
<i>Asclepias tuberosa</i>	butterfly weed	1						
<i>Baptisia lactea</i>	white wild indigo			1				
<i>Bouteloua curtipendula</i>	side-oats grama	2			2			
<i>Celtis occidentalis</i>	hackberry	2						
<i>Coreopsis tripteris</i>	tall coreopsis	3			2			
<i>Cornus racemosa</i>	gray dogwood		1					
<i>Desmanthus illinoensis</i>	illinois bundleflower	1	1		1			
<i>Drymocallis arguta</i>	prairie cinquefoil				1			
<i>Echinacea purpurea</i>	purple coneflower	1		1	2			
<i>Elymus canadensis</i>	canada wild rye	3			3			
<i>Eryngium yuccifolium</i>	rattlesnake master		1					
<i>Eupatorium altissimum</i>	tall boneset			1		1		
<i>Eupatorium serotinum</i>	late boneset	1			1			1
<i>Euthamia graminifolia sp</i>	grass-leaved goldenrod	3			1			1
<i>Eutrochium purpureum</i>	purple joe pye weed	2	1	1		1		
<i>Fraxinus lanceolata</i>	green ash	1	1		1			1 1
<i>Geum canadense</i>	white avens		1	2				
<i>Glyceria striata</i>	green fowl manna grass							1
<i>Hackelia virginiana</i>	stickseed					1		
<i>Helianthus grosseserratus</i>	sawtooth sunflower	3	3		2			1
<i>Heliopsis helianthoides</i>	false sunflower			1				
<i>Heraclium maximum</i>	cow parsnip					1		
<i>Juncus effusus</i>	soft rush							2
<i>Leersia oryzoides</i>	rice cut grass							2
<i>Lespedeza capitata</i>	round-headed bush clover					1		
<i>Monarda fistulosa</i>	wild bergamot	3	5	3	3	3		
<i>Oenothera biennis</i>	common evening primrose	1	1	1		1		
<i>Oligoneuron rigidum</i>	stiff goldenrod	3	3	3	2	2		
<i>Panicum virgatum</i>	switch grass	1	2	3				
<i>Parthenium integrifolium</i>	wild quinine	1	1		1	1		
<i>Physostegia virginiana</i>	obedient plant				1	1		

Chicago Park District Natural Areas RFQA: Eugene Field Park Natural Area (*continued*)

species	common_name	Prairie		Savanna	Wet Prairie		Wetland	
		2015	2019	2019	2015	2019	2015	2019
<i>Pontederia cordata</i>	pickerelweed						5	2
<i>Populus deltoides</i>	eastern cottonwood	1	1	1	1		1	
<i>Pycnanthemum tenuifolium</i>	slender mountain mint			1				
<i>Pycnanthemum virginianum</i>	common mountain mint	2	2		1		1	1
<i>Quercus alba</i>	white oak	1						
<i>Quercus macrocarpa</i>	bur oak	3	1	4	1			
<i>Ratibida pinnata</i>	yellow coneflower	4	4	2	3	2		
<i>Rudbeckia hirta</i>	black-eyed susan	1	1					
<i>Rudbeckia triloba</i>	brown black-eyed susan		2	1		2		1
<i>Sagittaria latifolia</i>	common arrowhead						3	2
<i>Schizachyrium scoparium</i>	little bluestem		2	1	1			
<i>Silphium integrifolium</i> sp.		2			2			
<i>Silphium laciniatum</i>	compass plant	1	1		1			
<i>Silphium perfoliatum</i>	cup plant	2	1	1	1			
<i>Silphium terebinthinaceum</i>	prairie dock	1	1		1	1		1
<i>Solidago altissima</i>	tall goldenrod	1	2		1	1		1
<i>Solidago ulmifolia</i>	elm-leaved goldenrod					1		
<i>Sorghastrum nutans</i>	indian grass	2			2			
<i>Symphyotrichum laeve</i>	smooth blue aster	2		1	2			
<i>Tradescantia ohimensis</i>	common spiderwort		3			2		1
<i>Uvularia grandiflora</i>	bellwort			1				
<i>Verbena urticifolia</i>	hairy white vervain				1			
<i>Verbesina alternifolia</i>	wingstem							2
<i>Vernonia fasciculata</i>	common ironweed	3					1	
<i>Zizia aurea</i>	golden alexanders	1	3		1	2		

Note:

Cover classes of RFQA Species: 1 = 0-1%, 2 = 2-5%, 3 = 6-25%,
4 = 26-50%, 5 = 51-75%, 6 = 76-95%, 7 = 96-100%

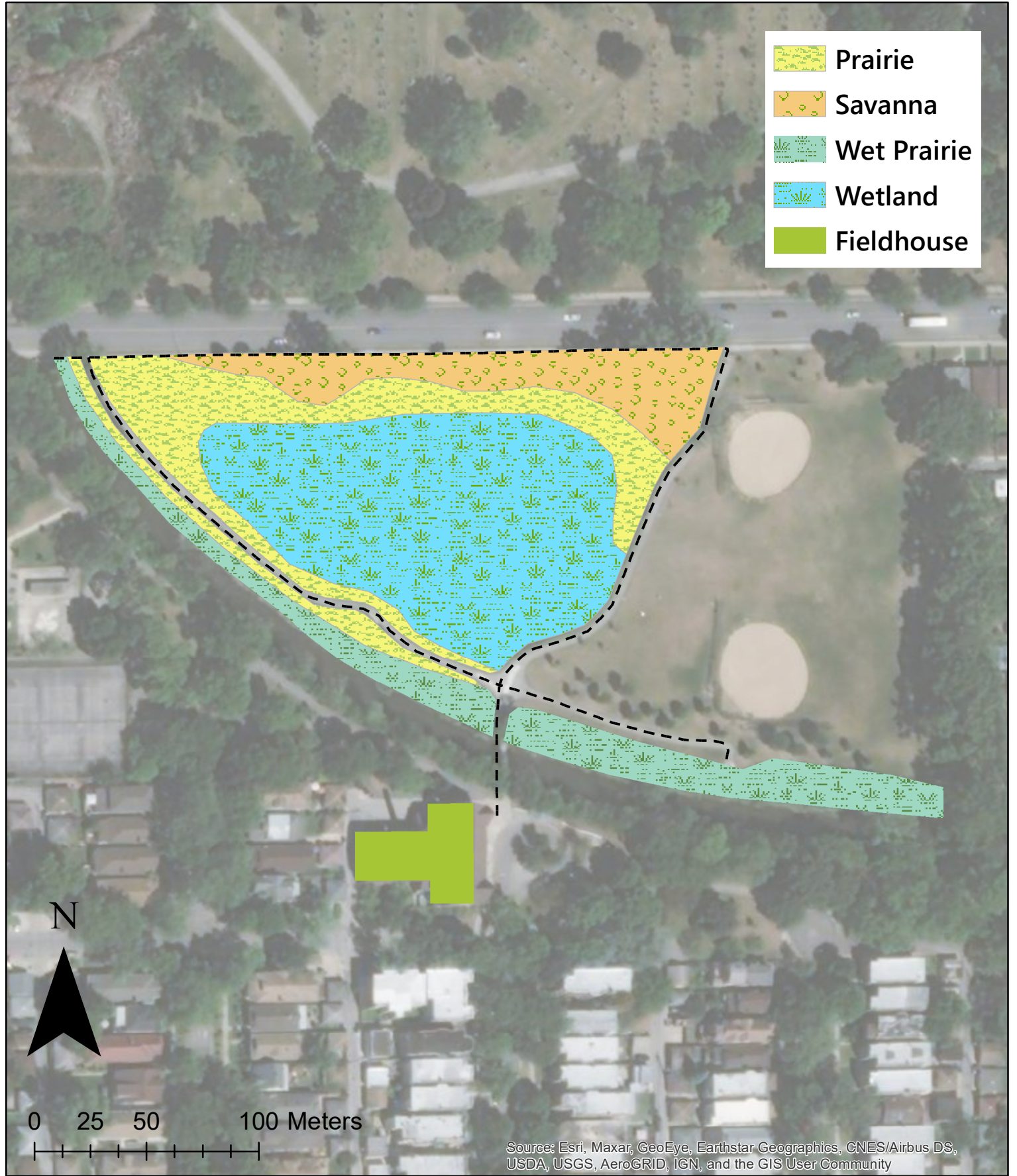
Note:

Starting in 2019, invasive species were included in the species list.

NATURAL AREAS

Eugene Field Park Natural Area

Rapid Floristic Quality Assessment 2021



	Prairie
	Savanna
	Wet Prairie
	Wetland
	Fieldhouse

Source: Esri, Maxar, GeoEye, Earthstar Geographics, CNES/Airbus DS, USDA, USGS, AeroGRID, IGN, and the GIS User Community